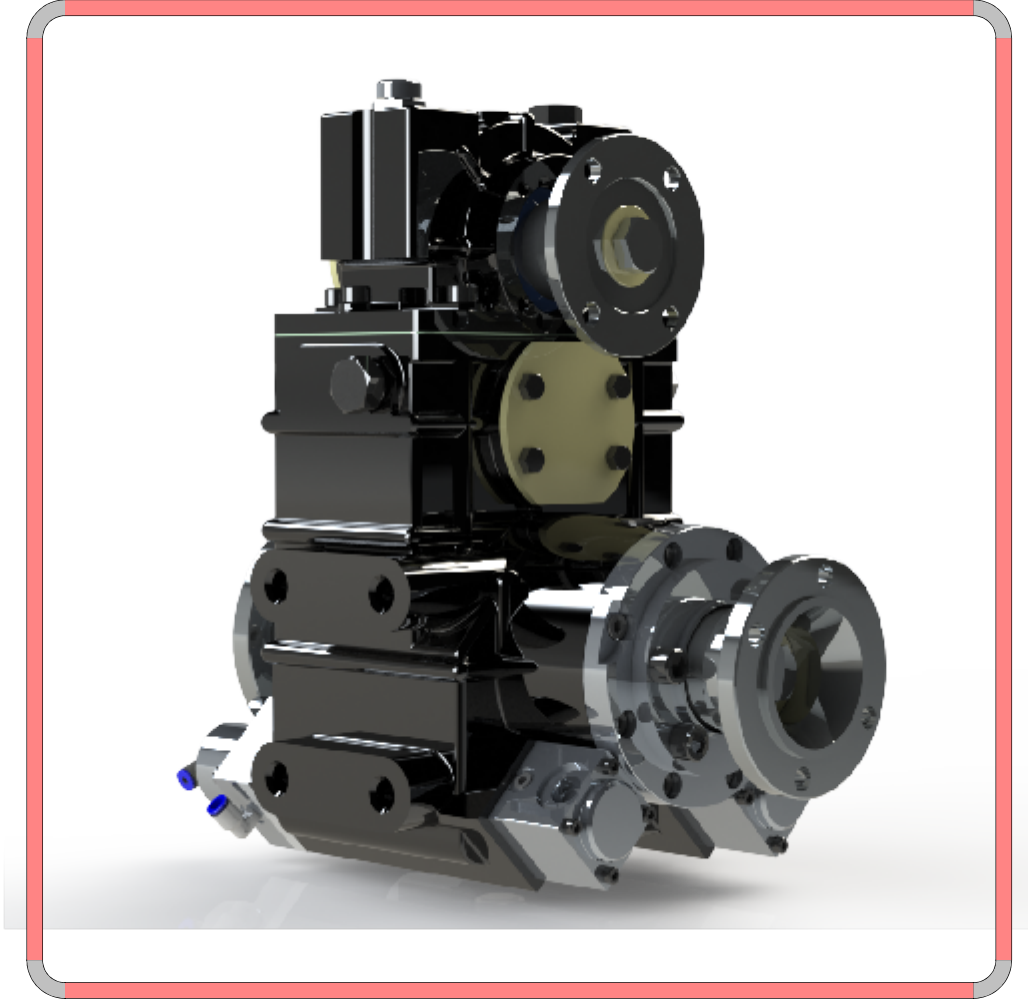


**Fire Fighting Trucks, Fire Jeeps and Water Trucks. 430 KGM, Vertical,  
Designed For Light Duty Applications**

General Description



- 430 KGM vertical Split Shaft PTO is designed for light duty trucks with 3-Stage.
- Pump&Roll featured gearbox can be installed as horizontal also.
- It can provide 100% of input speed.
- Control system can be pneumatic or mechanic.
- PTO shaft can be at differential side or cabin side.
- Second PTO output is an option. In case of double PTO, the output is requested, PTO outputs can be shifted independently.
- PTO outputs can be design with all ISO standard flanges as well as suitable housing for any kind of hydraulic pump.
- Cooling system can be mount on the gearbox.
- Engage/Disengage sensor can be installed to observe if PTO is engaged or not, also RPM counter is another option.
- In case of drum brake is located on the behind of the main transmission, UARA.400 can be designed with drum brake if requested.

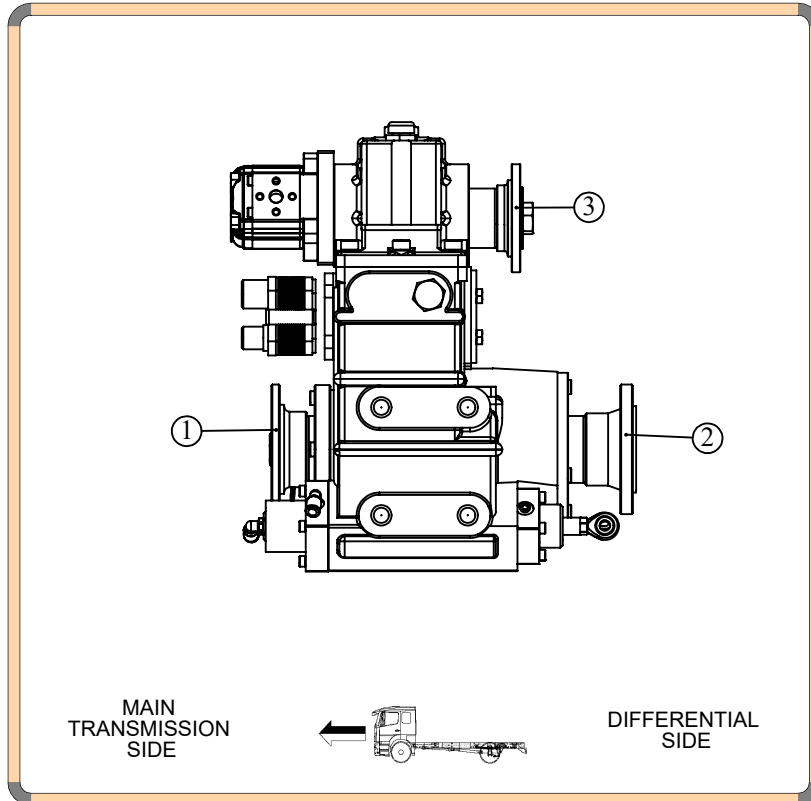


**Fire Fighting Trucks, Fire Jeeps and Water Trucks. 430 KGM, Vertical, Designed For Light Duty Applications**

Technical Description

Technical Values			
	Max. Values	Input/Output	Working Range (MAX.)
① & ②	4297.5 Nm	1/1	-
③	82 kW	1/1.5 1/1.8	3960 rpm
④			

Weight	60 kg
Body Material	GGG 50
Oil Type & Amount	80W90 & 2 lt



- Kozmaksan Şirketi katalogta verilen bilgileri önceden bildirmeden değiştirme hakkını saklı tutar. Bu belge genel bilgiler içerir ve taahhüt ve sözleşme niteliğinde değildir.  
- Verilen güç ve tork bilgileri sadece PTO/ara şanzımana aittir. Uygulama yapılacak şanzıman, motor ve aracın PTO/ara şanzıman için uygun gördüğü değerleri aşmayınız.  
- Şanzımana civata ile bağlanan PTO'lara takılacak pompa, şaft vb. parçaların ağırlık ve askıda kalan uzunlukları şanzıman ve araç üreticisinin onayladığı limitleri geçmemelidir.

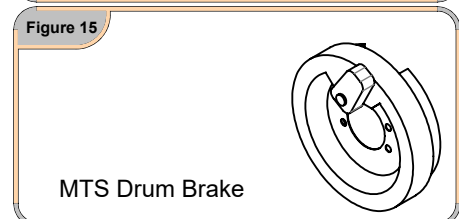
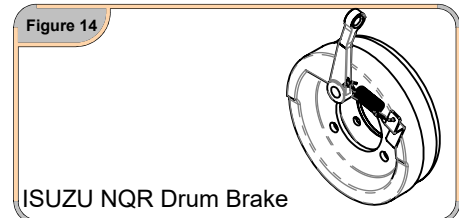
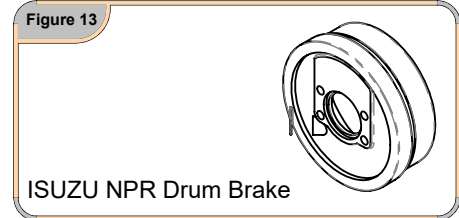
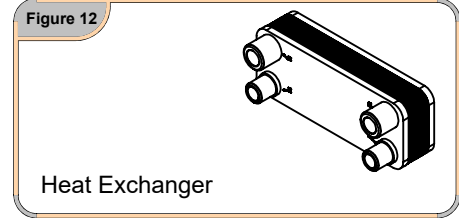
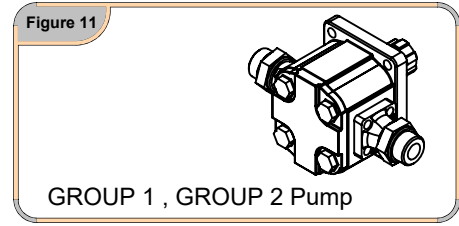
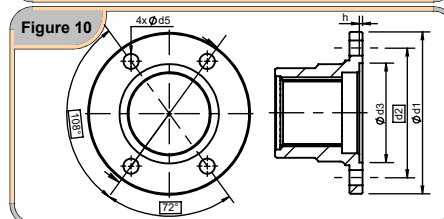
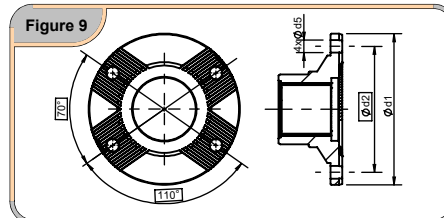
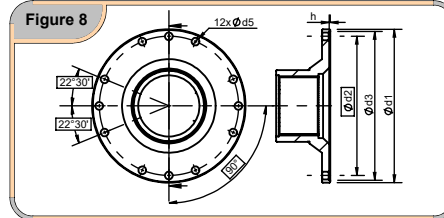
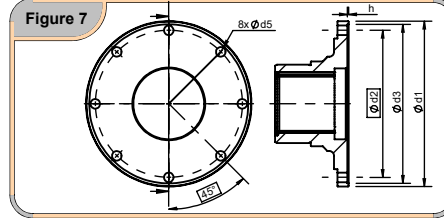
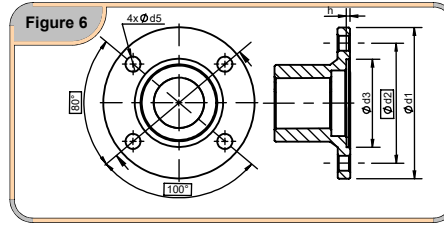
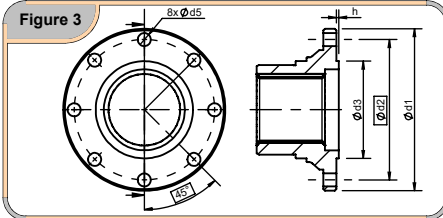
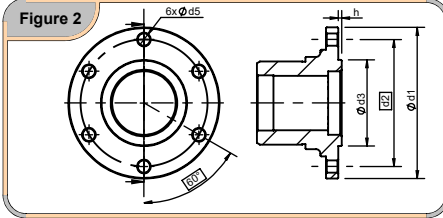
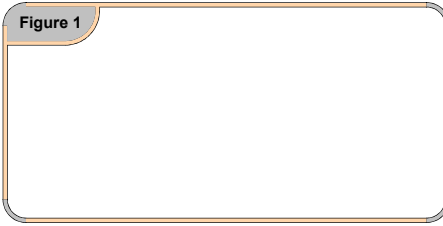
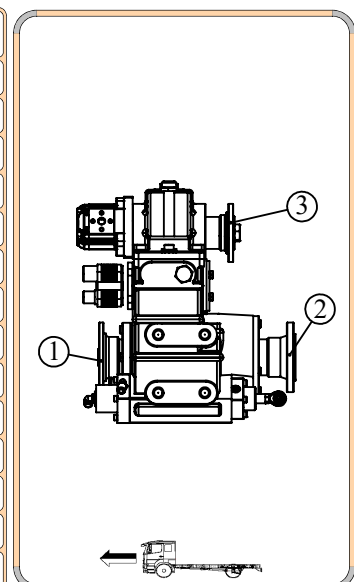
**Fire Fighting Trucks, Fire Jeeps and Water Trucks. 430 KGM, Vertical,  
Designed For Light Duty Applications**
**Output Descriptions**


Figure No	No of Bolt	Ø d1	Ø d2	Ø d3	Ø d5	h	Standard	1	2	3	4	5	6
1	-	-	-	-	-	-							
2	6	100	84	57	8,1	2,3	ISO 7646 -DIN 100					C06-011	
3	8	120	101,5	75	10,1	2,3	ISO 7646 -DIN 120	C06-058	C06-057			C06-061	
3	8	150	130	75	12,1	2,3	ISO 7646 -DIN 150						
6	4	97	79,37	60,32	10,1	2,3	ISO 7647 -SAE1300						C06-144
6	4	146	120,65	95,25	12,1	2,3	ISO 7647 -SAE 1510						
6	4	116	95,25	69,85	12,1	2,3	ISO 7647 -SAE 1400						C06-007
6	4	151	120,65	95,25	14,1	2,3	ISO 7647 -SAE 1500	C06-117	C06-118				
6	4	87	69,85	57,10	8,1	2	ISO 7647 -SAE1100						C06-203
7	8	175	155,57	168,22	10,1	1,5	ISO 7647 -SAE1600						
8	12	203	184,15	196,86	10,1	1,5	ISO 7647 -SAE1800						
9	4	180	-	15	-	-	ISO 8667 - T 180						
9	4	150	-	13	-	-	ISO 8667 - T 150	C06-128	C06-129				
9	4	120	-	11	-	-	ISO 8667 - T120	C06-130	C06-131				



Please contact with KOZMAKSAN, If you have any questions or requests.